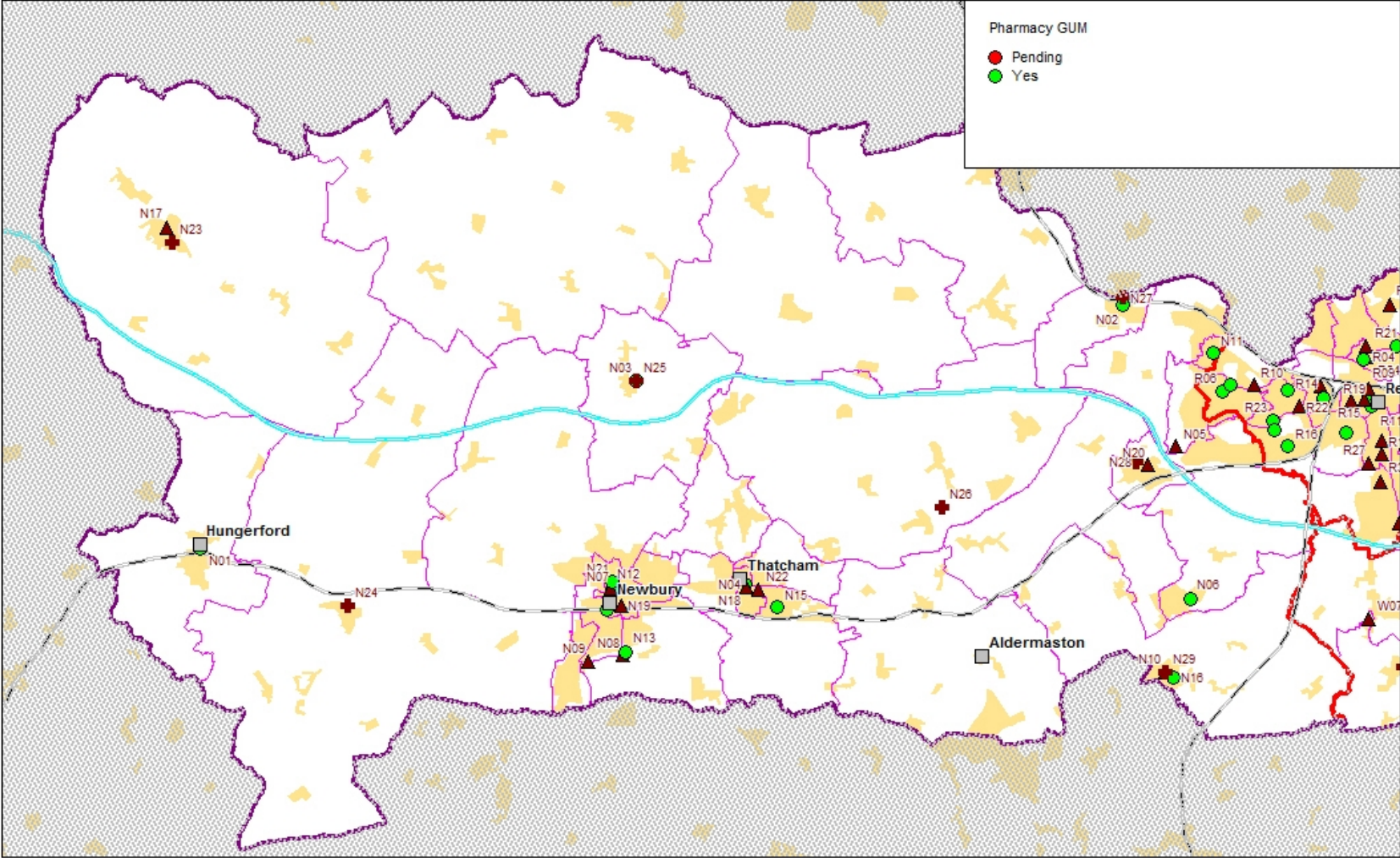


Appendix 2: Enhanced Services in West Berkshire

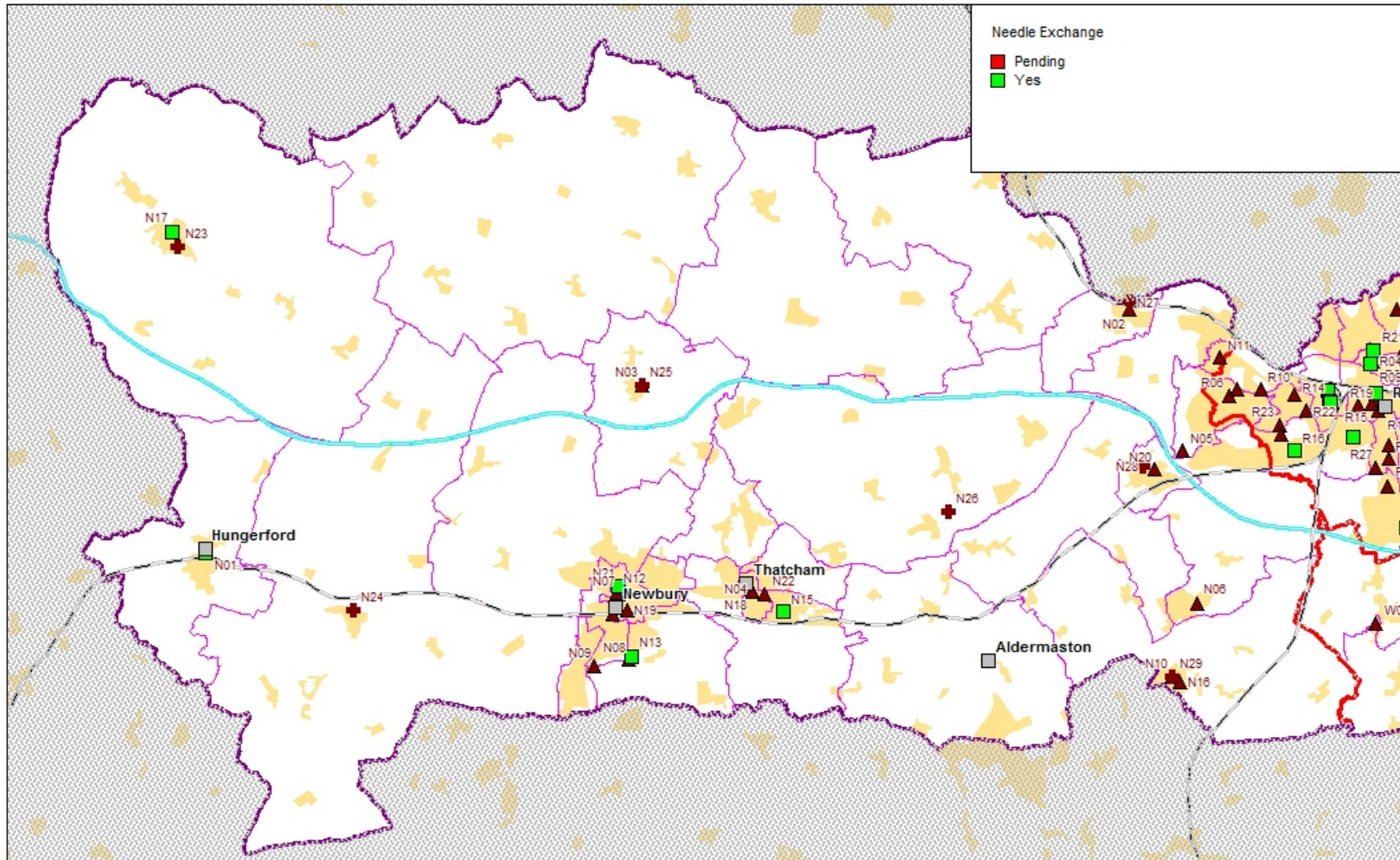
Figure 1: Map of Pharmacies in West Berkshire who provide GUM Services



Berks_PNA_ES_Aug14_r1.wor 26/08/2014 Sid Beauchant BHFT

Reproduced from OS data by permission of Ordnance Survey, on behalf of the Controller of Her Majesty's Stationery Office (Licence No. OSKW9912), NAVTEQ data by permission of NAVTEQ Corporation Licence No. NVMM0611, NVMM0612) GeoPlan data by permission of Geoplan (Licence No. GPKW9912) + Crown Copyright - 2014 All rights reserved

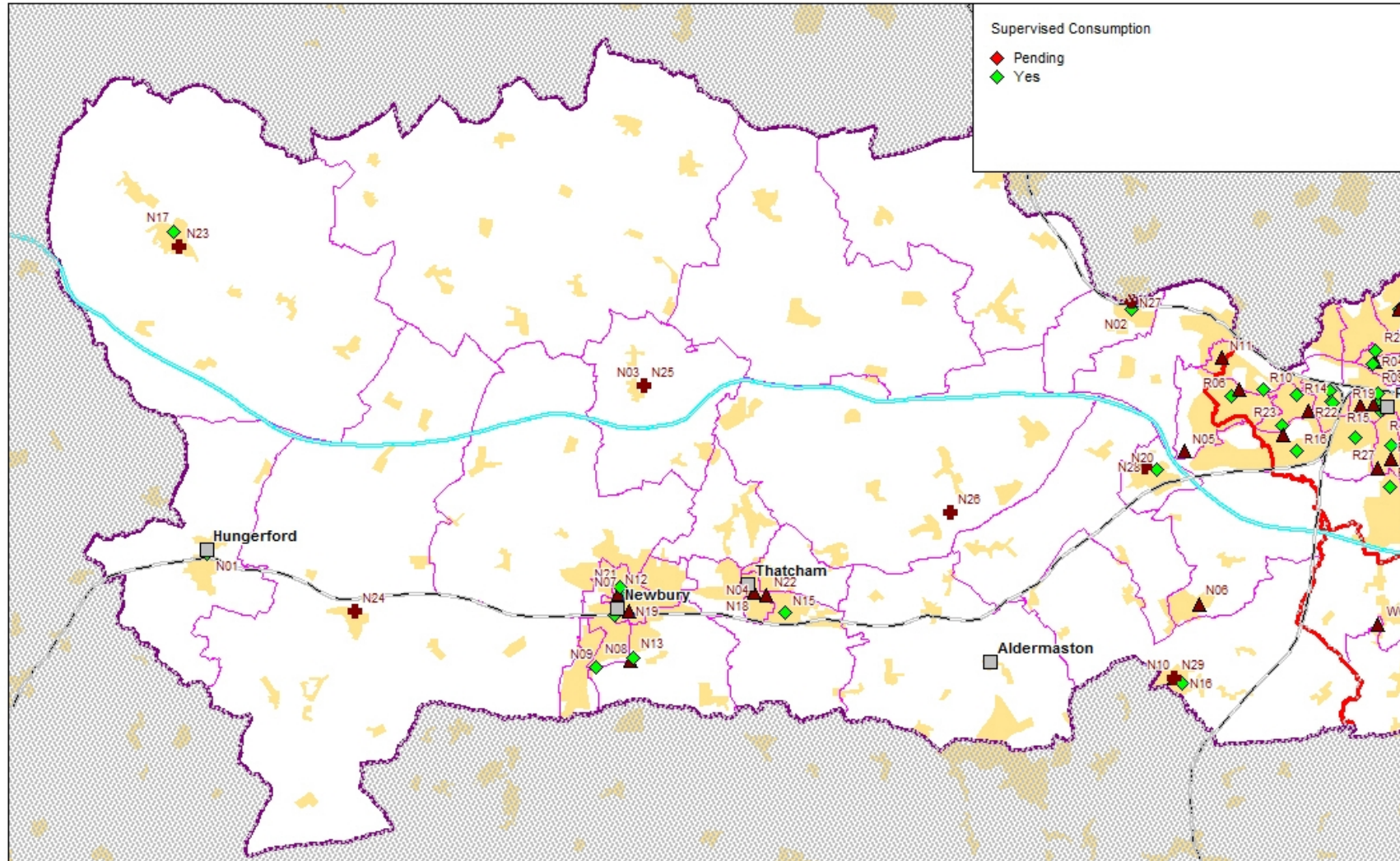
Figure 2: Map of Pharmacies in West Berkshire who provide Needle Exchange Services



Reproduced from OS data by permission of Ordnance Survey,
 on behalf of the Controller of Her Majesty's Stationery Office (Licence No. OSKW9912),
 NAVTEQ data by permission of NAVTEQ Corporation Licence No. NVMM0611, NVMM0612)
 GeoPlan data by permission of Geoplan (Licence No. GPKW9912)
 + Crown Copyright - 2014 All rights reserved

Berks_PNA_ES_Aug14_r1.wor 26/08/2014 Sid Beauchant BHFT

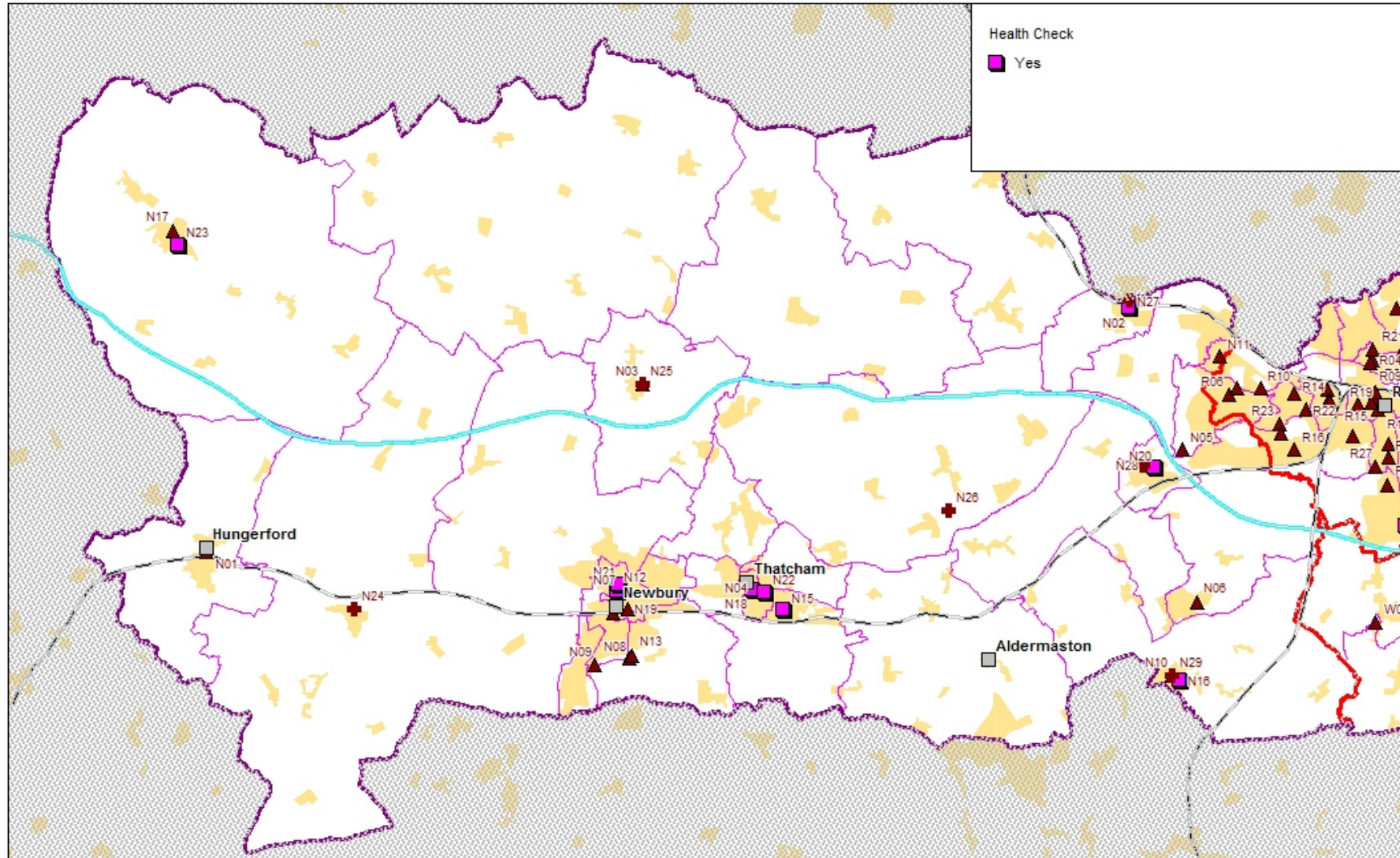
Figure 3: Map of Pharmacies in West Berkshire who provide Supervised Consumption Services



Berks_PNA_ES_Aug14_r1.wor 26/08/2014 Sid Beauchant BHFT

Reproduced from OS data by permission of Ordnance Survey, on behalf of the Controller of Her Majesty's Stationery Office (Licence No. OSKW9912), NAVTEQ data by permission of NAVTEQ Corporation Licence No. NVMM0611, NVMM0612) GeoPlan data by permission of Geoplan (Licence No. GPKW9912) = Crown Copyright - 2014 All rights reserved

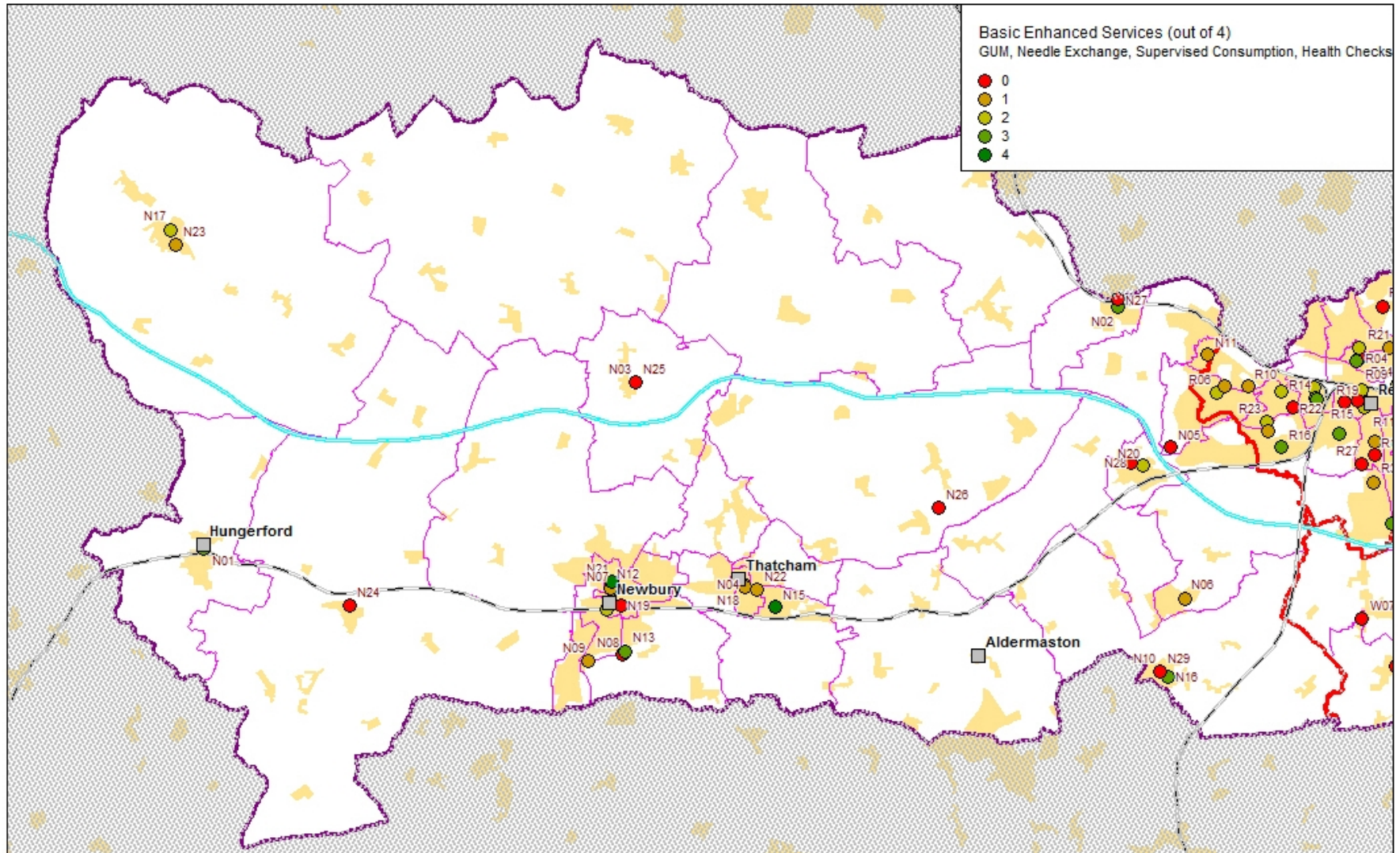
Figure 4: Map of Pharmacies in West Berkshire who provide the NHS Health Check Programme



Berks_PNA_ES_Aug14_r1.wor 26/08/2014 Sid Beauchant BHFT

Reproduced from OS data by permission of Ordnance Survey,
 on behalf of the Controller of Her Majesty's Stationery Office (Licence No. OSKW9912),
 NAVTEQ data by permission of NAVTEQ Corporation Licence No. NVMM0611, NVMM0612)
 GeoPlan data by permission of Geoplan (Licence No. GPKW9912)
 © Crown Copyright - 2014 All rights reserved

Figure 5: Map of Pharmacies in West Berkshire to show how many of the Basic Enhanced Services are provided



Reproduced from OS data by permission of Ordnance Survey, on behalf of the Controller of Her Majesty's Stationery Office (Licence No. OSKW9912), NAVTEQ data by permission of NAVTEQ Corporation Licence No. NVMM0611, NVMM0612) GeoPlan data by permission of Geoplan (Licence No. GPKW9912) + Crown Copyright - 2014 All rights reserved

Berks_PNA_ES_Aug14_r1.wor 26/08/2014 Sid Beauchant BHFT